

60 CHURCH STREET

BIRMINGHAM

**A fusion of classical looks
and contemporary space,
60 Church Street delivers
the perfect combination
of location, connectivity
and amenity.**

60 CHURCH STREET

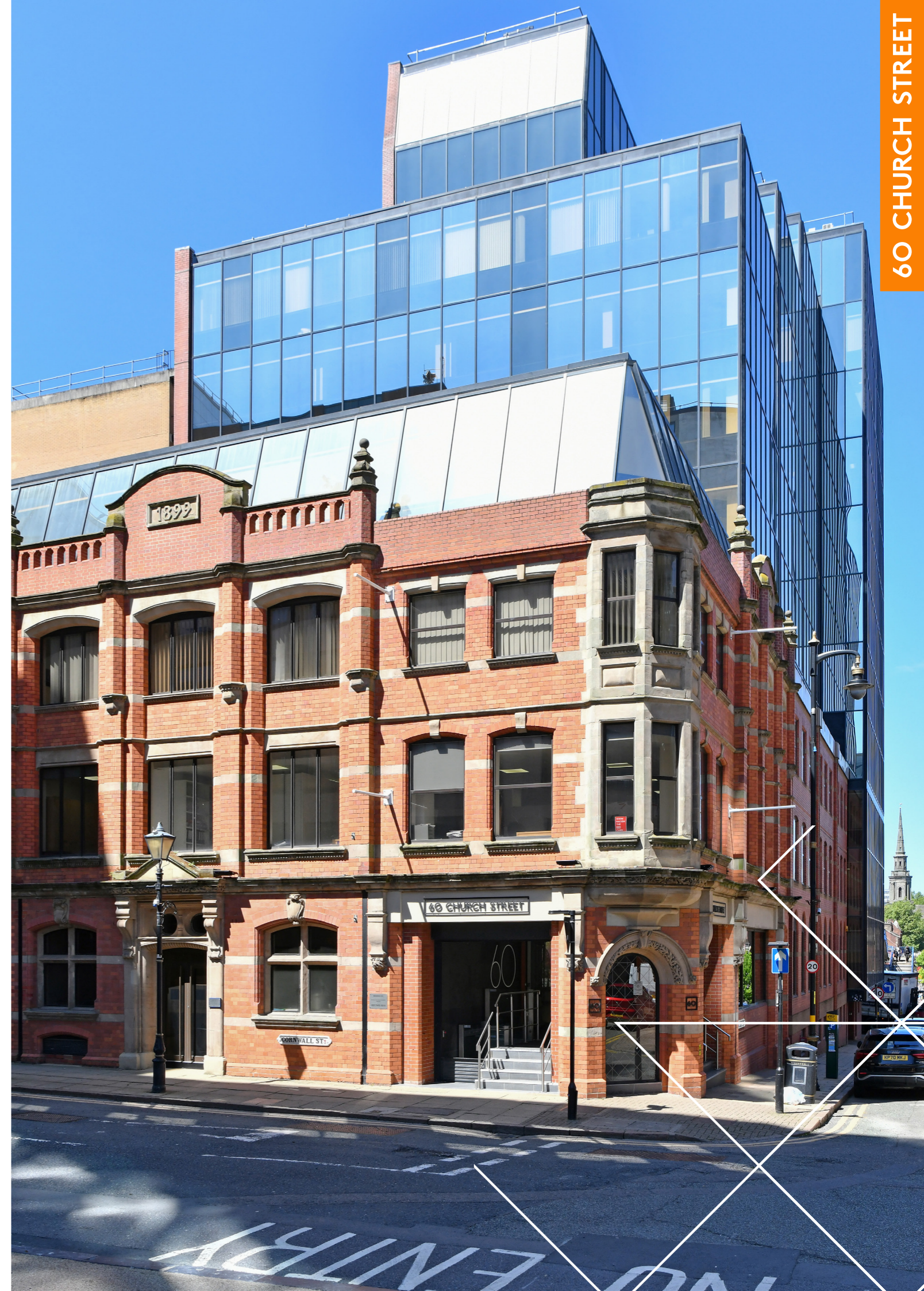
UNIQUE

BALANCE OF FORM AND FUNCTION

60 Church Street represents a perfect combination of high quality, city centre office accommodation at an affordable price point.

Totalling 64,000 sq ft over 11 floors, 60 Church Street has been extensively refurbished in recent years to ensure it remains an attractive proposition for contemporary office occupiers seeking efficient, high quality space.

Fusing an historic red brick façade with contemporary materials, 60 Church Street creates a visual statement and a unique balance of form and function, providing outstanding views across Birmingham's main Business District.



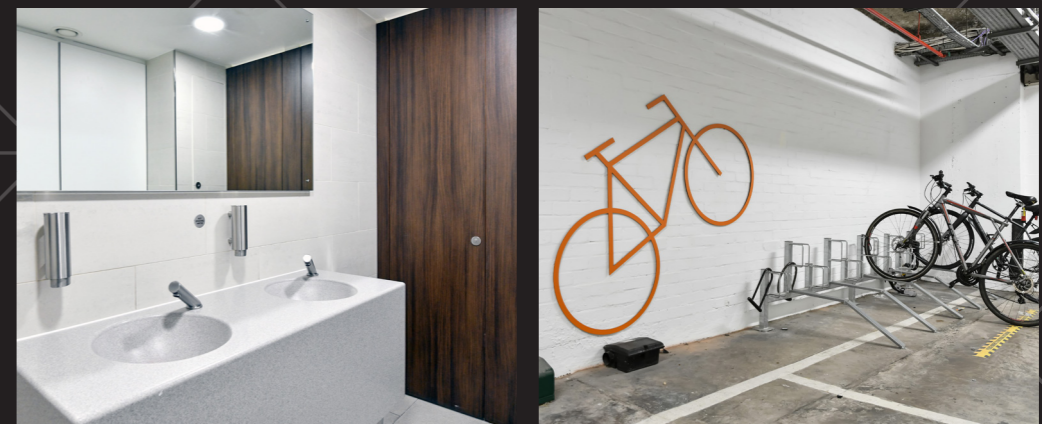
ATTRACTIVE

PROPOSITION FOR CONTEMPORARY OFFICE OCCUPIERS

60 Church Street features exceptional finishes across all currently vacant suites, as well as shared areas and the main reception.

The occupiers benefit from a range of enhanced and additional services. These include access to secure cycle storage, shower and changing facilities located in the basement with additional showers located on even-numbered floors. Tenants also have access to concierge services and secure on-site basement parking.

- LED lighting
- Spacious tiled lift lobbies
- Perimeter trunking and underfloor channels
- Three passenger lifts
- Male, female and accessible WCs
- Secure basement cycle storage, showers and changing facilities
- Additional shower facilities on even floors
- New feature reception accessed 24/7
- Secure basement car parking at a ratio of 1:2,500 sq ft
- EPC – B



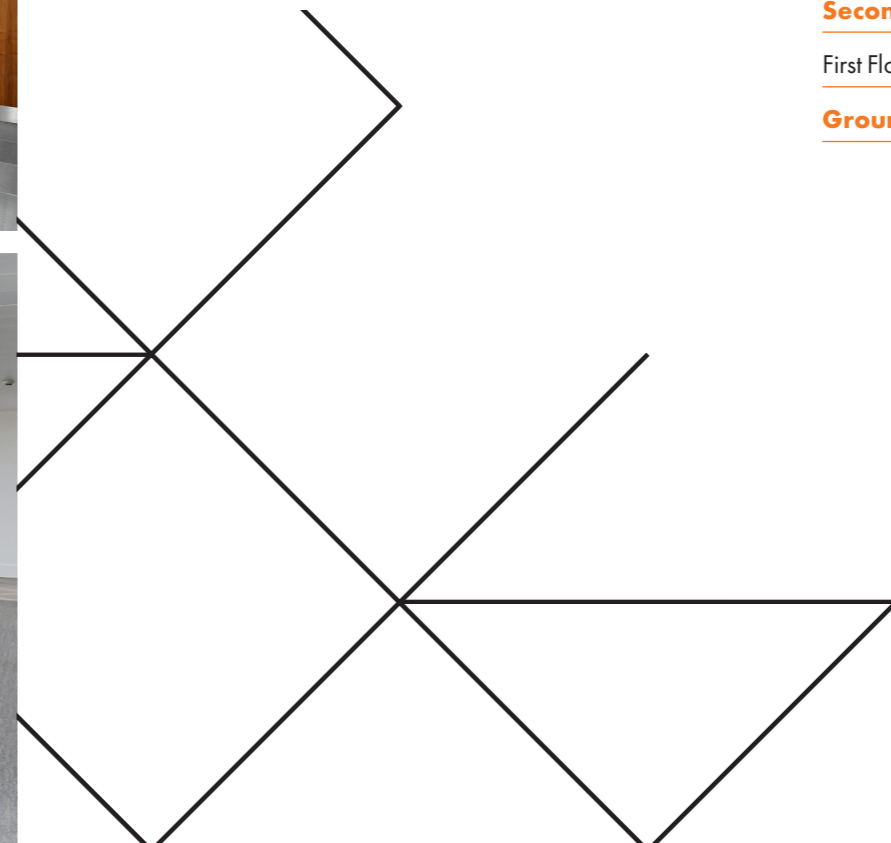


SUITES

FOR ANY TYPE OF OCCUPIER

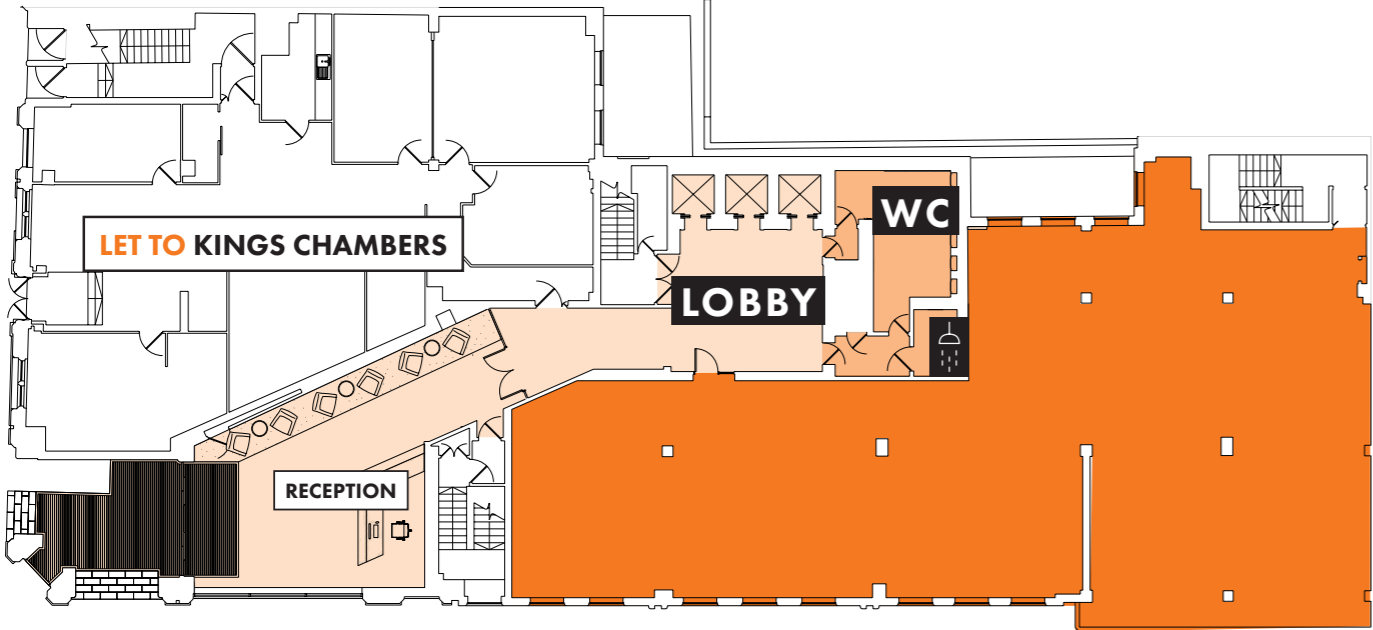
60 Church Street offers a range of available suites to accommodate a variety of occupier types and profiles. Suites ranging from 3,576 sq ft to 8,768 sq ft are available across the building.

Tenth Floor	Let
Ninth Floor	Let
Eighth Floor	Let
Seventh Floor	Let
Sixth Floor	Let
Fifth Floor	5,637 sq ft
Fourth Floor	Let
Third Floor	Let
Second Floor	8,768 sq ft
First Floor	Let
Ground Floor (Part)	3,576 sq ft



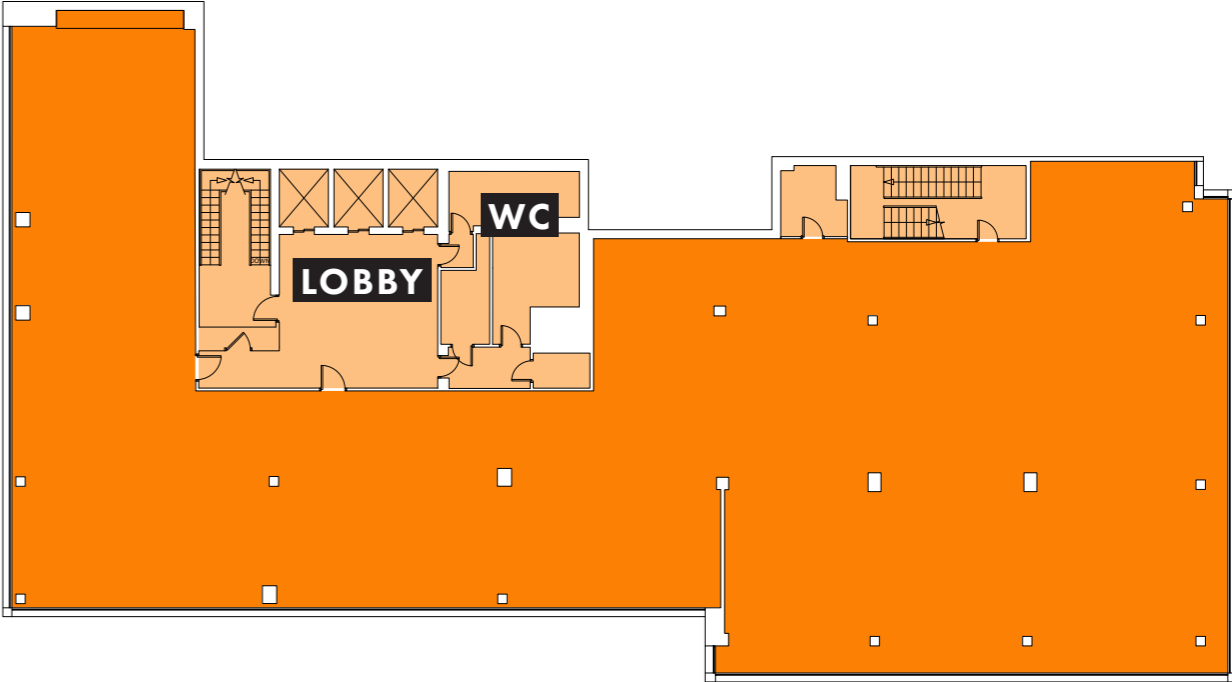
GROUND FLOOR (PART)

3,576 SQ FT



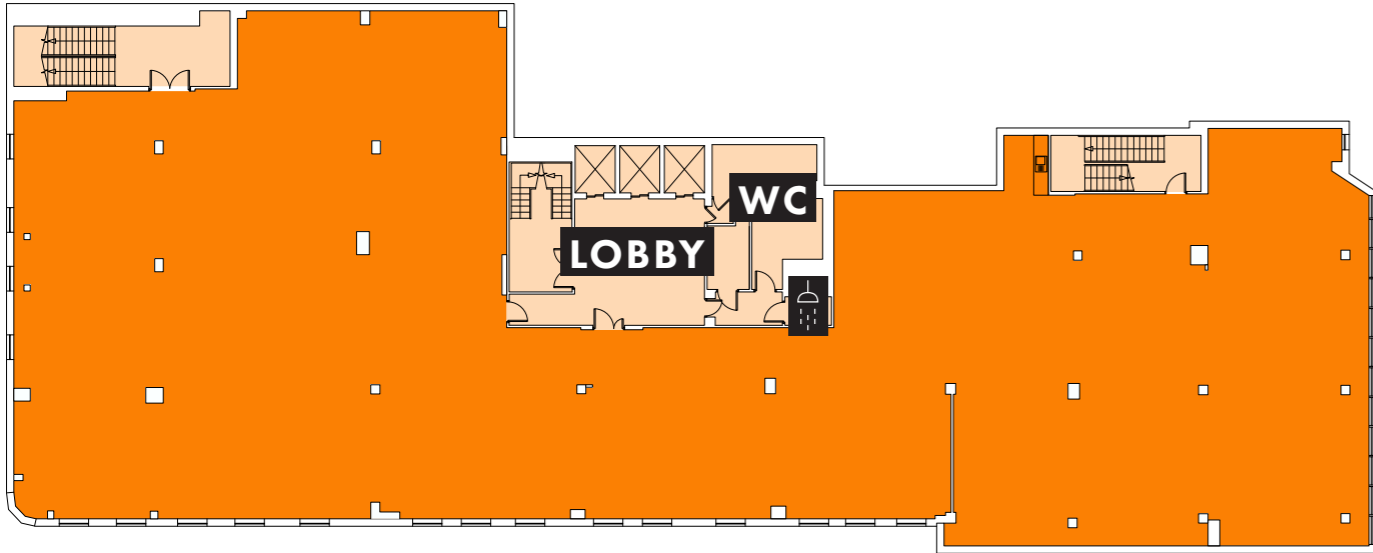
5TH FLOOR

5,637 SQ FT



2ND FLOOR

8,768 SQ FT



PERFECTLY

LOCATED AT THE HEART OF THE COLMORE BUSINESS DISTRICT

Occupying a strong position at the heart of the Colmore Business District, Birmingham's professional and financial services heartland, 60 Church Street is also just a few minutes from the city's famous Jewellery Quarter, full of thriving pubs, bars and restaurants.

Located on the corner of Church Street and Cornwall Street, 60 Church Street is at the centre of exciting plans for the £160 million redevelopment of the Snow Hill area of the city.

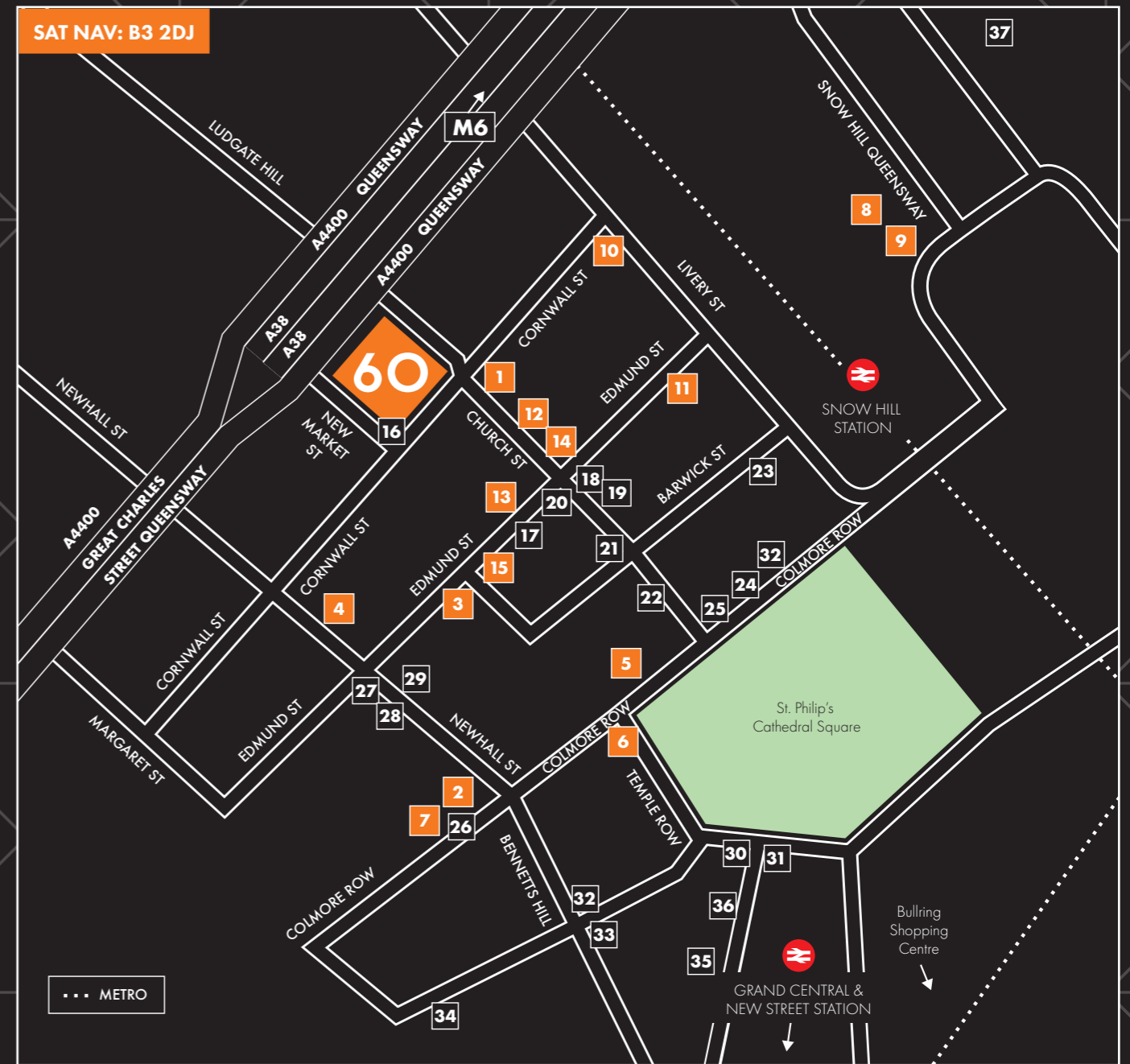
The first phases of work, which have seen major enhancements to pedestrian areas, the public realm and traffic flows around the district, have already completed and helped lift the whole environment of the district.

60 Church Street is within easy reach of Birmingham's top retail and leisure amenities. From the Bullring and Grand

Central shopping centres, to a wealth of bars, restaurants and coffee houses, everything from top-end dining, to grab-and-go lunch options can be found on the doorstep.

The superb location also provides instant access to the city's key transport hubs, with Snow Hill, New Street and Moor Street stations all just a short walk away, as well as the future Curzon Street HS2 station, and cycle and scooter hire points.

The nearby A38(M) enables access to the national motorway network, via Junction 6 of the M6 within a few minutes' drive to the North. Bus and West Midlands Metro tram stops are also nearby, creating unparalleled connectivity to local, regional, and national transport networks.



KEY OCCUPIERS

- | | |
|---|--|
| 1 Munich RE, Interpath and Lockton | 10 Sedgwick, Kroll, Kainos and Beazley Insurance |
| 2 Arcadis, Grant Thornton, Shoosmiths and RSM | 11 RSA, Wates, Gleeds and Randst |
| 3 Gateley Plc | 12 Wilkes Partnership |
| 4 Mott Macdonald | 13 Squire Patton Boggs and Forrester |
| 5 Pinsent Masons | 14 Smith Cooper and MRI International |
| 6 Mills & Reeve | 15 Oxygen Finance, Mace, Claritas, QBE and Alvarez |
| 7 Eversheds Sutherland | |
| 8 Gowling WLG / HS2 | |
| 9 KPMG | |

AMENITIES

- | | |
|------------------|------------------|
| 16 Purnell's | 27 Asha's |
| 17 Plates | 28 Coffee No.1 |
| 18 Hotel du Vin | 29 Pret A Manger |
| 19 Health du Vin | 30 Fumo |
| 20 Urban Coffee | 31 The Ivy |
| 21 The Roebuck | 32 Philpotts |
| 22 Gaucho | 33 Cosy Club |
| 23 Primitivo | 34 Adam's |
| 24 The Alchemist | 35 The Botanist |
| 25 Gusto | 36 San Carlo |
| 26 Orelle | 37 PureGym |

ENHANCED

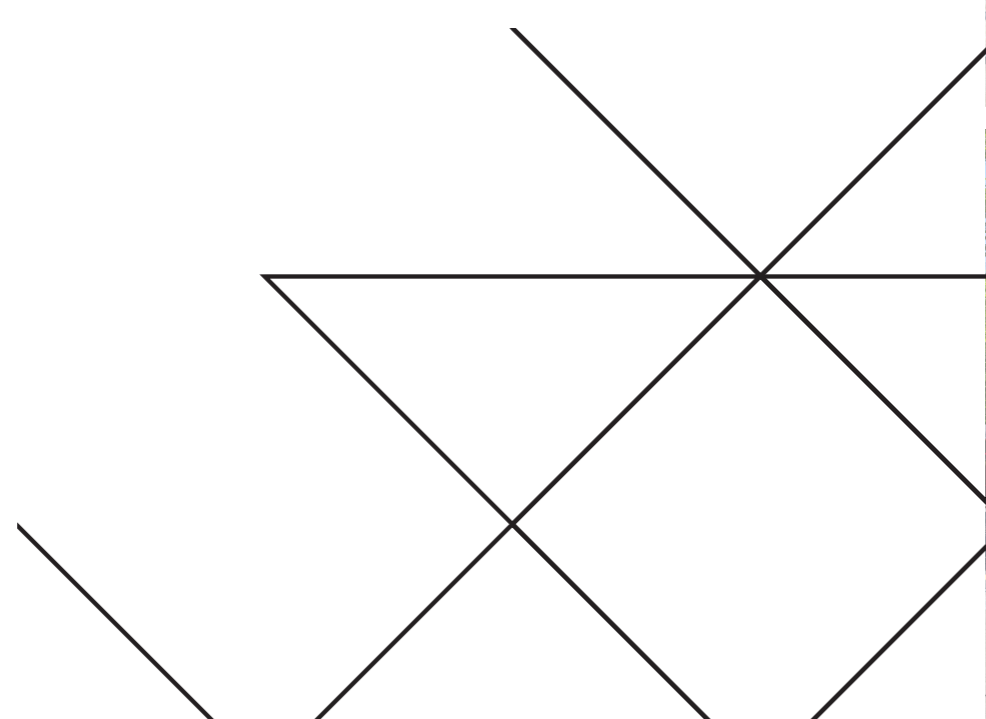
IMMEDIATE AREA

The building is exceptionally positioned within the Colmore Business District and has benefited from the £1.2 million programme of improvement works around Cornwall Street, which blends with the existing Church Street Square public realm.

The public realm improvements are part of the Colmore Business Improvement District's Outstanding Places Objective and are complementary to the wider Snow Hill improvements.

The improvement works have been managed by a Public Realm Board, made up of representatives from Birmingham City Council, Transport for West Midlands and Colmore BID.

The works have already greatly enhanced the area, with the installation of new lighting and seating, alongside widened pavements to create a fresh, welcoming and open environment.



CONTACT

FOR MORE INFORMATION



Jonathan Ottewell

jottewell@savills.com
07972 000 150



George Jennings

george.jennings@avisonyoung.com
07900 678 125

60CHURCHSTREET.CO.UK

Savills and Avison Young hereby gives notice that the information provided (either for itself, for any joint agents or for the vendors lessors of this property whose agent Savills and Avison Young is) in this brochure is provided on the following conditions: (1) The particulars are set out as a general outline only, for the guidance of intending purchasers and/or lessees and do not constitute an offer or contract, or part of an offer or contract. (2) All descriptions, dimensions and references to this property's condition and any necessary permission for use and occupation, and any other relevant details, are given in good faith and are believed to be correct. However, any intending purchasers or tenants should not rely on them as statements or representations of fact but satisfy themselves of their correctness by inspection or otherwise. (3) No person in the employment of Savills and Avison Young, or any joint agents, has any authority to make or give any representation or warranty whatsoever in relation to the property or properties in this brochure. (4) All prices quoted are exclusive of VAT. (5) Savills and Avison Young shall have no liability whatsoever in relation to any documents contained within the brochure or any elements of the brochure which were prepared solely by third parties, and not by Savills and Avison Young.

Crafted by Core | 0121 232 5000 | core-marketing.co.uk | April 2024

60CHURCHSTREET.CO.UK

60 CHURCH STREET